

Valley Distribution Center

Suite 101

15022 Puyallup Street
Suite 101
Sumner, WA 98390
www.cbre.com/tacoma

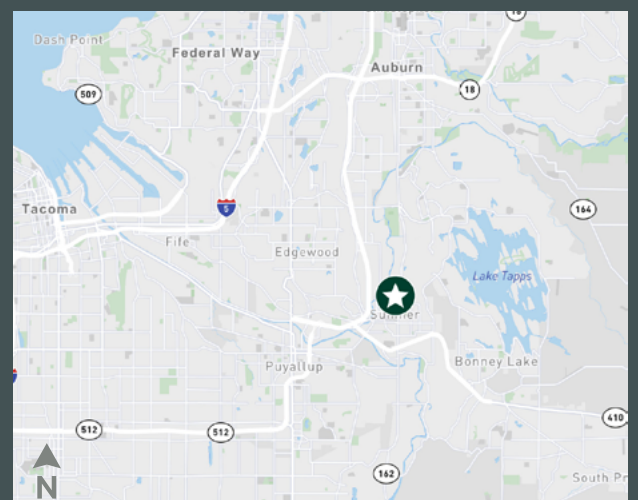
Available Now



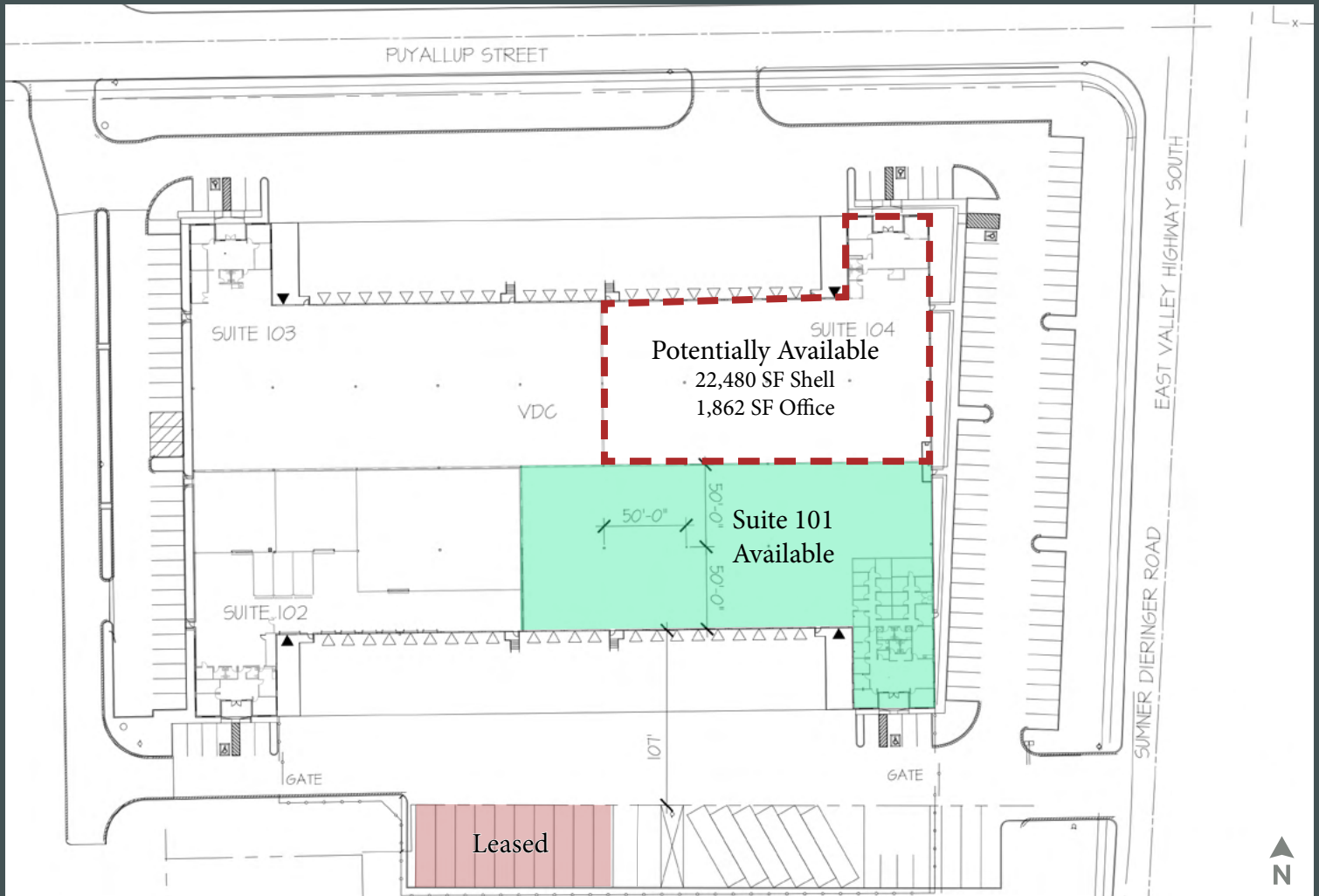
Property Details

- + ±27,500 SF available now, potentially up to 49,980 SF
- + ±4,571 SF office, potentially 6,433 SF
- + 13 dock doors, potentially 22 (cross-loaded)
- + 1 oversized drive-in door, potentially 2 (12'x14')
- + 25' clear height
- + Fully fenced/secured truck court
- + ESFR sprinklers
- + 15 trailer stalls available
 - 8 stalls at 53'
 - 7 stalls at 48'
- + End cap space with ample parking
- + 200+ amps of 480V 3-phase power
- + Call brokers for rates

Owned and Operated by:



Site Plan



Contact Us

Monte Decker

Senior Vice President
+1 253 596 0041
monte.decker@cbre.com

Chris Cowles

Vice President
+1 253 596 0048
chris.cowles@cbre.com

CBRE, Inc.

1201 Pacific Avenue
Suite 1502
Tacoma, WA 98402

© 2022 CBRE, Inc. All rights reserved. This information has been obtained from sources believed reliable, but has not been verified for accuracy or completeness. You should conduct a careful, independent investigation of the property and verify all information. Any reliance on this information is solely at your own risk. CBRE and the CBRE logo are service marks of CBRE, Inc. All other marks displayed on this document are the property of their respective owners, and the use of such logos does not imply any affiliation with or endorsement of CBRE. Photos herein are the property of their respective owners. Use of these images without the express written consent of the owner is prohibited. SM 3.29.22