

# CENTER PLAZA - BUILDING 2

2620 WILLIAMSON PLACE, DUPONT, WA 98327

Warehouse/Flex Space



## Available Spaces

### Building 2, Suite 129

- 2,987 SF shell with 1,156 SF office
- 1 oversized GL door (14' x 12')
- 100 amps of 208/120 volt, 3-phase power
- Available now

### Building 2, Suite 133

- 1,837 SF shell with 1,113 SF office including ±392 SF of front office and ±721 SF production area
- 1 oversized GL door (14' x 12')
- 100 amps of 208/120 volt, 3-phase power
- Available now

## Property Features

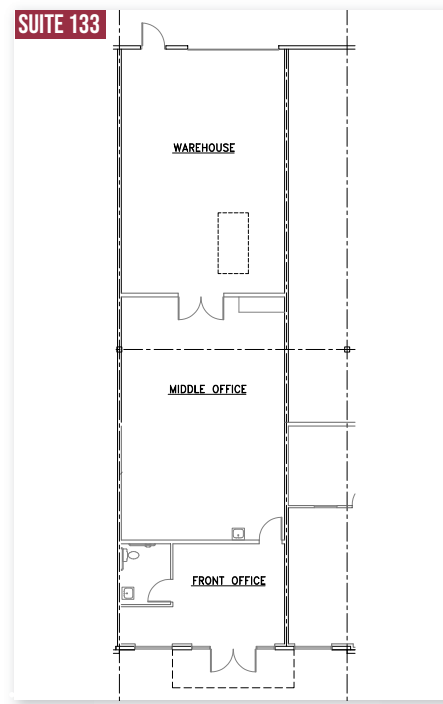
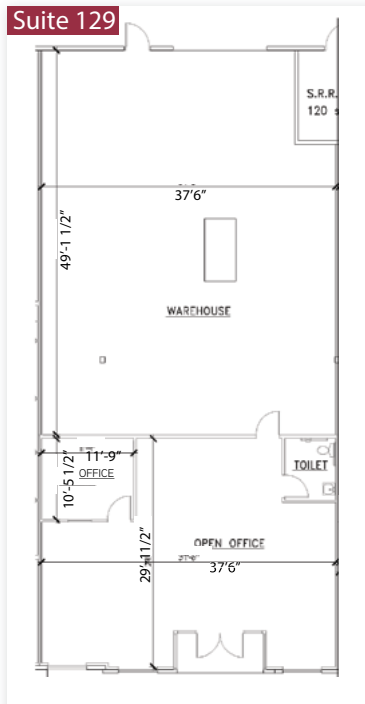
- 21' warehouse clear height
- Quality office finishes with HVAC
- Excellent access to I-5
- Abundant parking
- On-site Anytime Fitness



# CENTER PLAZA

2620 Williamson Place, DuPont, WA 98327

**DPI** Davis Property  
& Investment



Contact CBRE for more info:

Monte Decker  
253-596-0041  
monte.decker@cbre.com

Chris Cowles  
253-596-0048  
chris.cowles@cbre.com

Lisa Rowe  
206-777-5122  
lisar@dpillc.com

© 2024 CBRE, Inc. All rights reserved. This information has been obtained from sources believed reliable but has not been verified for accuracy or completeness. CBRE, Inc. makes no guarantee, representation or warranty and accepts no responsibility or liability as to the accuracy, completeness, or reliability of the information contained herein. You should conduct a careful, independent investigation of the property and verify all information. Any reliance on this information is solely at your own risk. SD 12.13.24

Owned & Operated by:

**DPI** Davis Property  
& Investment

**CBRE**

dpillc.com