

# Industrial/Flex for Lease CUMBERLAND INDUSTRIAL CENTER - BLDG. B

6805-6807 S 220th Street, Kent, WA 98032



## SUITES 6805-6807

<b>TOTAL SHELL SF:</b>	6,444 SF
<b>OFFICE SF:</b>	1,368 SF
<b>LEASE RATES:</b>	Call for Rates
<b>TOTAL PROJECT SF:</b>	118,680 SF
<b>BUILT:</b>	1980
<b>ZONING:</b>	L1

## PROPERTY OVERVIEW

High quality industrial park with local ownership. This four building multi tenant asset has a high quality image and all the bells and whistles most smaller space assets lack, such as higher clear height, taller grade level doors, heavy 480v 3p power and a professional image with new offices finishes throughout the park. With the ability to expand during your lease term as your business grows within this local owners portfolio, Cumberland is a great place to do business. Join the Davis Properties family, they treat their tenants very well.

## PROPERTY HIGHLIGHTS

- Centrally located in Kent on West Valley Highway and 220th
- Local ownership and property management
- 1 oversized grade level loading door
- 14'-16' clear height
- Fresh office build-out with new LED lighting, paint, carpet and bathroom fixtures
- Frontage on 220th with visibility from West Valley
- 425 amps 3-phase 480V power
- Available now

## CONTACT

**Sean Durkin, SIOR, MSRE, CCIM**  
sdurkin@lee-associates.com  
D 206.773.2682

**John Brussa**  
jbrussa@lee-associates.com  
D 206.773.2675

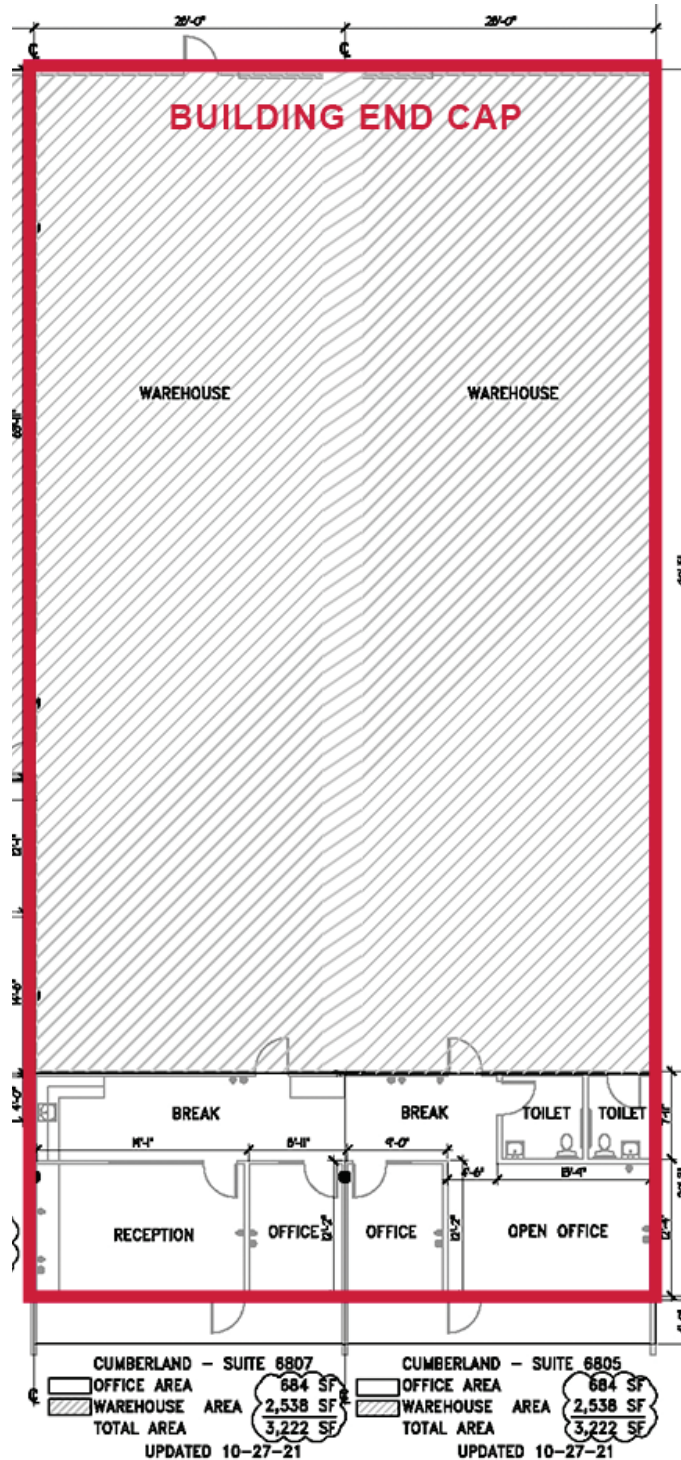
**DPI** Davis Property  
& Investment

We obtained the information above from sources we believe to be reliable. However, we have not verified its accuracy and make no guarantee, warranty or representation about it. It is submitted subject to the possibility of errors, omissions, change of price, rental or other conditions, prior sale, lease or financing, or withdrawal without notice. We include projections, opinions, assumptions or estimates for example only, and they may not represent current or future performance of the property. You and your tax and legal advisors should conduct your own investigation of the property and transaction.

# Industrial/Flex for Lease

## CUMBERLAND INDUSTRIAL CENTER - BLDG. B

6805-6807 S 220th Street, Kent, WA 98032



### CONTACT

**Sean Durkin, SIOR, MSRE, CCIM**  
sdurkin@lee-associates.com  
D 206.773.2682

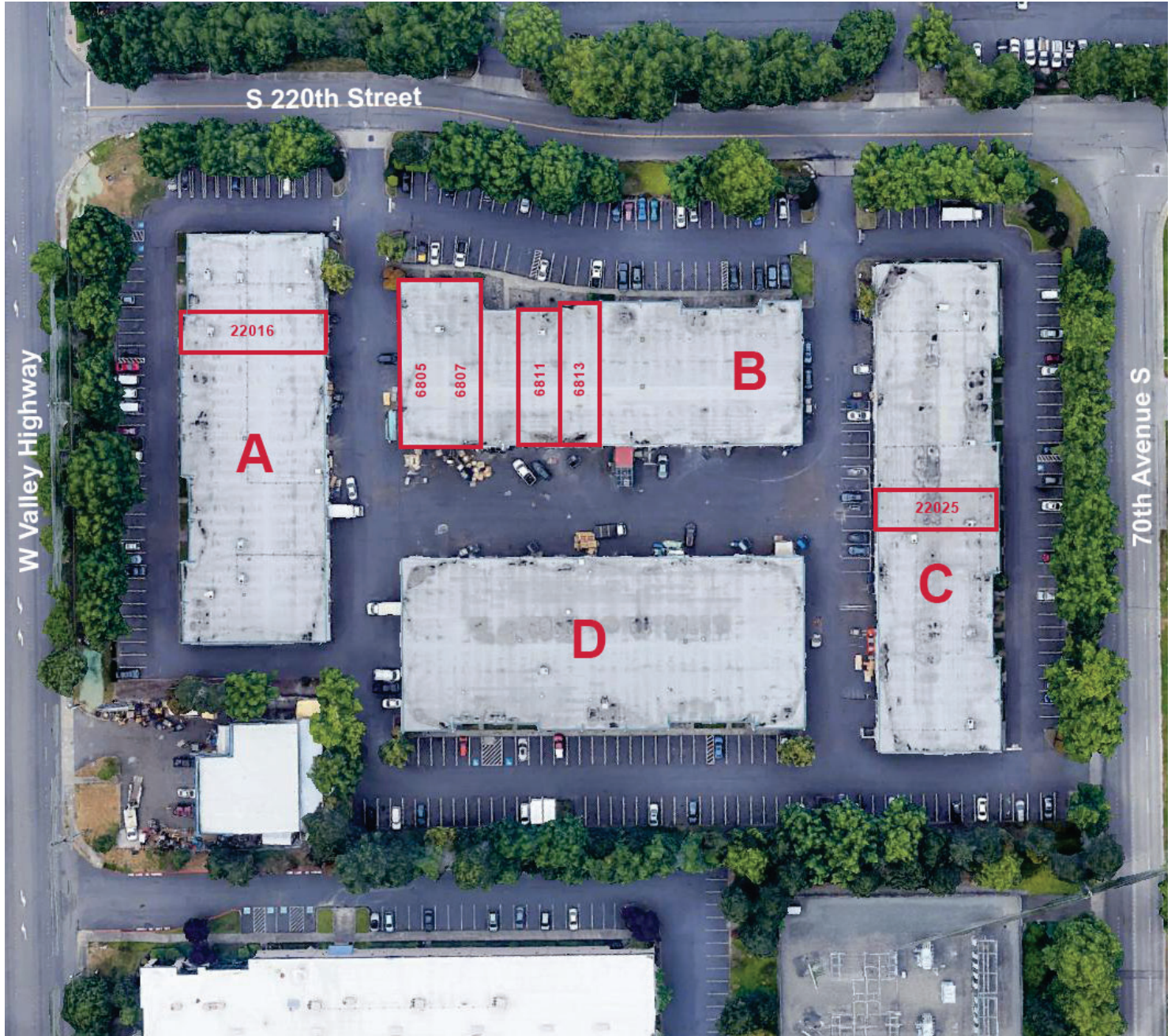
**John Brussa**  
jbrussa@lee-associates.com  
D 206.773.2675



We obtained the information above from sources we believe to be reliable. However, we have not verified its accuracy and make no guarantee, warranty or representation about it. It is submitted subject to the possibility of errors, omissions, change of price, rental or other conditions, prior sale, lease or financing, or withdrawal without notice. We include projections, opinions, assumptions or estimates for example only, and they may not represent current or future performance of the property. You and your tax and legal advisors should conduct your own investigation of the property and transaction.

# Industrial/Flex for Lease CUMBERLAND INDUSTRIAL CENTER - BLDG. B

6805-6807 S 220th Street, Kent, WA 98032



## CONTACT

**Sean Durkin, SIOR, MSRE, CCIM**  
sdurkin@lee-associates.com  
D 206.773.2682

**John Brussa**  
jbrussa@lee-associates.com  
D 206.773.2675



We obtained the information above from sources we believe to be reliable. However, we have not verified its accuracy and make no guarantee, warranty or representation about it. It is submitted subject to the possibility of errors, omissions, change of price, rental or other conditions, prior sale, lease or financing, or withdrawal without notice. We include projections, opinions, assumptions or estimates for example only, and they may not represent current or future performance of the property. You and your tax and legal advisors should conduct your own investigation of the property and transaction.