

Industrial/Flex for Lease CUMBERLAND INDUSTRIAL CENTER - BLDG. B

6813 S 220th Street, Kent, WA 98032



SUITE 6813

TOTAL SHELL SF:	2,973 SF
OFFICE SF:	844 SF
LEASE RATES:	Call for Rates
TOTAL PROJECT SF:	118,680 SF
BUILT:	1980
ZONING:	L1

PROPERTY OVERVIEW

High quality industrial park with local ownership. This four building multi tenant asset has a high quality image and all the bells and whistles most smaller space assets lack, such as higher clear height, taller grade level doors, heavy 480v 3p power and a professional image with new offices finishes throughout the park. With the ability to expand during your lease term as your business grows within this local owners portfolio, Cumberland is a great place to do business. Join the Davis Properties family, they treat their tenants very well.

PROPERTY HIGHLIGHTS

- Centrally located in Kent on West Valley Highway and 220th
- Local ownership and property management
- 1 grade level loading door
- 14'-16' clear height
- Fresh office build-out with new LED lighting, paint, carpet and bathroom fixtures
- Frontage on 220th with visibility from West Valley
- 225 amps 3-phase 480V power
- Available now

CONTACT

Sean Durkin, SIOR, MSRE, CCIM
sdurkin@lee-associates.com
D 206.773.2682

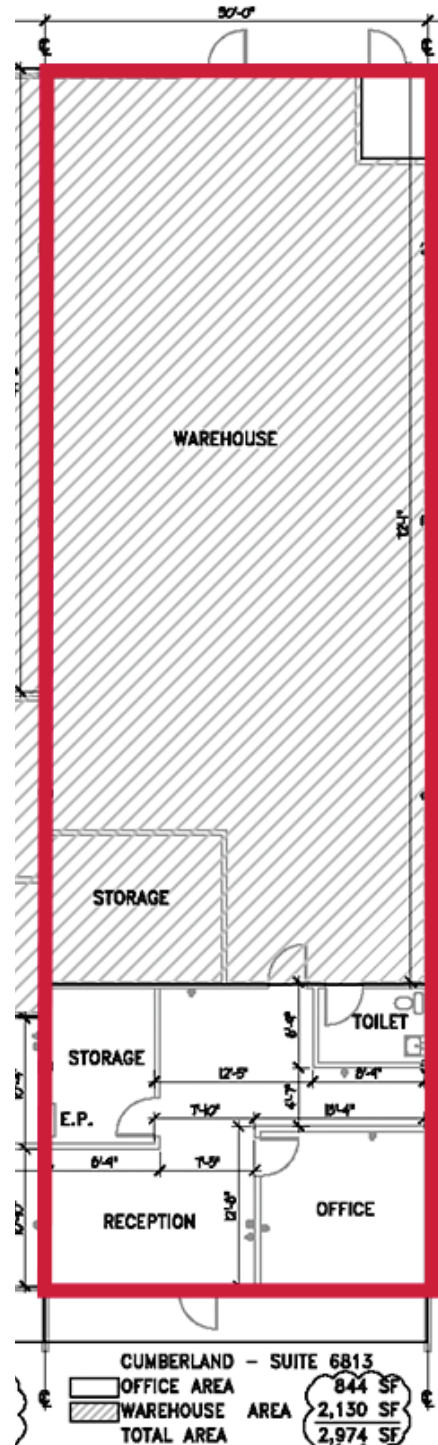
John Brussa
jbrussa@lee-associates.com
D 206.773.2675

DPI Davis Property
& Investment

We obtained the information above from sources we believe to be reliable. However, we have not verified its accuracy and make no guarantee, warranty or representation about it. It is submitted subject to the possibility of errors, omissions, change of price, rental or other conditions, prior sale, lease or financing, or withdrawal without notice. We include projections, opinions, assumptions or estimates for example only, and they may not represent current or future performance of the property. You and your tax and legal advisors should conduct your own investigation of the property and transaction.

Industrial/Flex for Lease CUMBERLAND INDUSTRIAL CENTER - BLDG. B

6813 S 220th Street, Kent, WA 98032



CONTACT

Sean Durkin, SIOR, MSRE, CCIM
sdurkin@lee-associates.com
D 206.773.2682

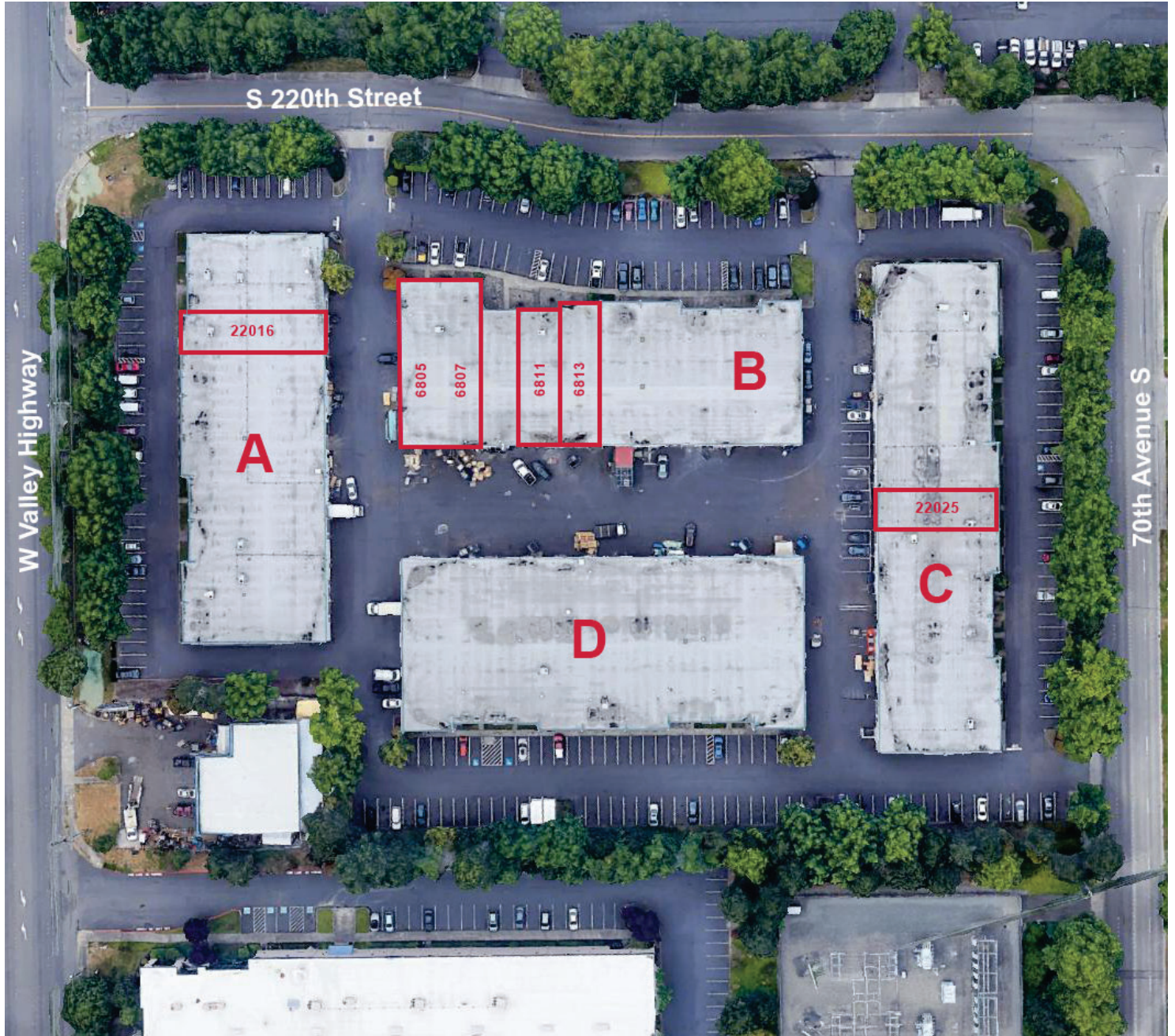
John Brussa
jbrussa@lee-associates.com
D 206.773.2675



We obtained the information above from sources we believe to be reliable. However, we have not verified its accuracy and make no guarantee, warranty or representation about it. It is submitted subject to the possibility of errors, omissions, change of price, rental or other conditions, prior sale, lease or financing, or withdrawal without notice. We include projections, opinions, assumptions or estimates for example only, and they may not represent current or future performance of the property. You and your tax and legal advisors should conduct your own investigation of the property and transaction.

Industrial/Flex for Lease CUMBERLAND INDUSTRIAL CENTER - BLDG. B

6813 S 220th Street, Kent, WA 98032



CONTACT

Sean Durkin, SIOR, MSRE, CCIM
sdurkin@lee-associates.com
D 206.773.2682

John Brussa
jbrussa@lee-associates.com
D 206.773.2675



We obtained the information above from sources we believe to be reliable. However, we have not verified its accuracy and make no guarantee, warranty or representation about it. It is submitted subject to the possibility of errors, omissions, change of price, rental or other conditions, prior sale, lease or financing, or withdrawal without notice. We include projections, opinions, assumptions or estimates for example only, and they may not represent current or future performance of the property. You and your tax and legal advisors should conduct your own investigation of the property and transaction.