

# CUMBERLAND INDUSTRIAL CENTER

22021 - 22023 70th Ave S, Kent, WA 98032

Available Immediately

Warehouse/Flex Space



## Property Specifications

### Suite Options

- 22021-23: 4,939 SF Shell, 1,984 SF Office
- 16' Clear Height
- 1 Grade Level Door per Bay
- 100 Amps 277/480 Volt 3-Phase Power
- Office HVAC
- All New Finishes & Fixtures
- LED Lighting

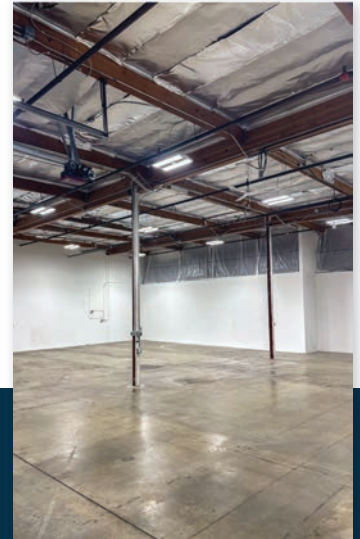
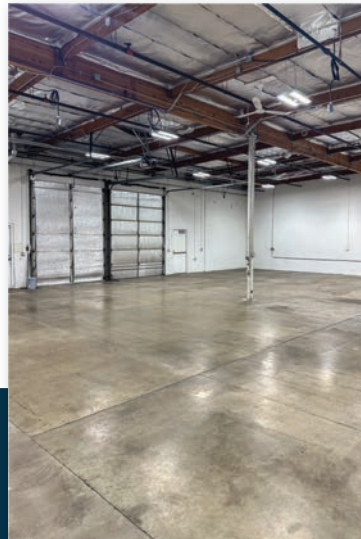
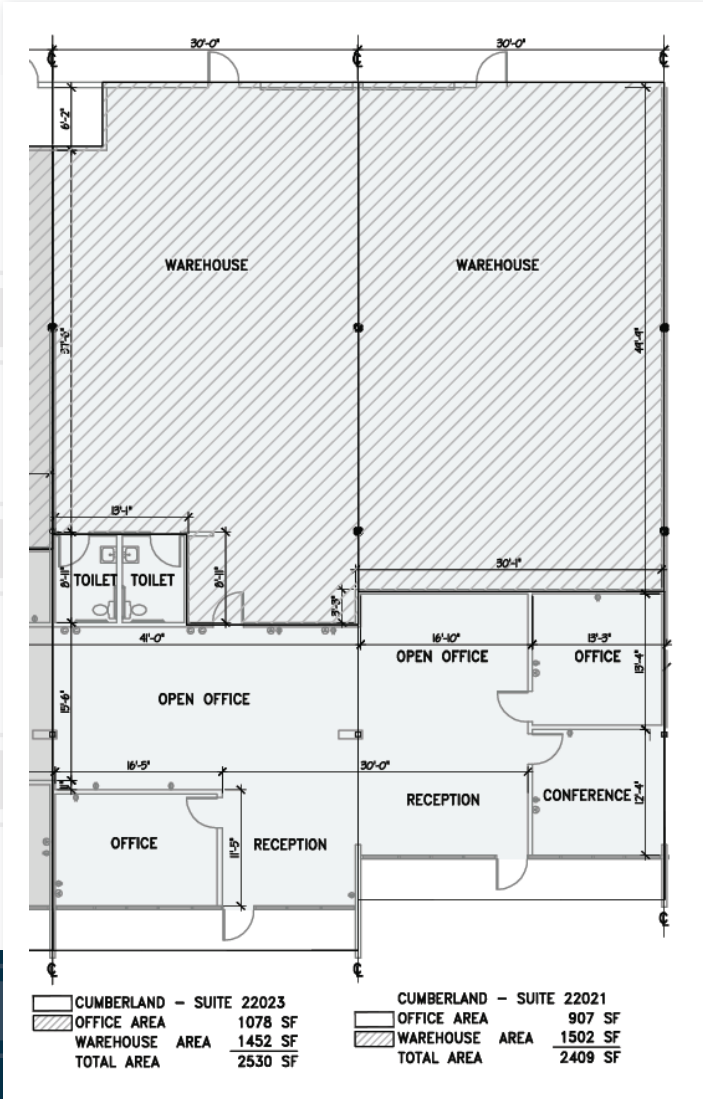
## Property Features

- Excellent freeway access to Highway 167 & I-5
- Monitored Video Surveillance & Security



# CUMBERLAND INDUSTRIAL CENTER

22021 - 22023 70th Ave S, Kent, WA 98032



Contact Lee & Associates for more info:

Sean Durkin  
206-773-2682  
sdurkin@lee-associates.com

John Brussa  
206-773-2675  
jbrussa@lee-associates.com

Lisa Rowe  
206-777-5122  
lisar@dpillc.com

The information provided in this document should be independently verified on any material matter represented herein.