

DAVIS COMMERCE CENTER

22737 72nd Ave S, Suite C104 Kent, WA 98032

Available June 1, 2025

Warehouse/Flex Space



Property Specifications

- 2,409 SF Total
- 607 SF Office
- 200 Amps 120/208v 3-phase power
- Office HVAC
- 1 GL loading door

Property Features

- West Valley Highway Visibility
- Excellent freeway access to Highway 167 & I-5
- Monitored Video Surveillance & Security
- Comcast cable and fiber available



Owned & Operated by:

DPI Davis Property
& Investment

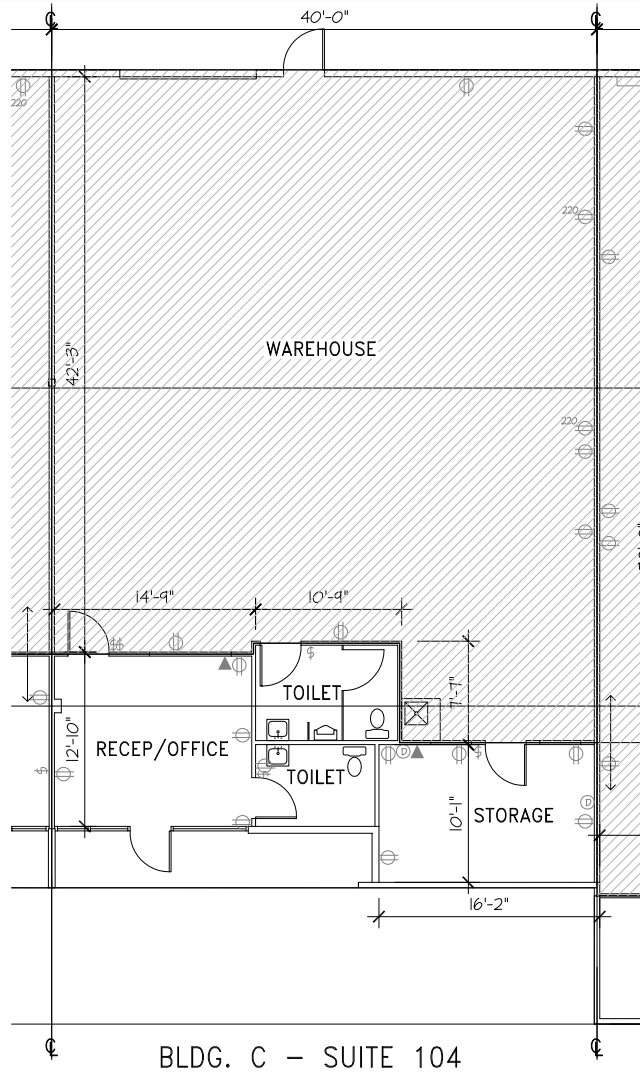
Leasing by:

km Kidder
Mathews

dpillc.com

DAVIS COMMERCE CENTER

DPI Davis Property
& Investment



Contact Kidder Mathews for more info:

Travis Stanaway
206-248-6526
travis.stanaway@kidder.com

Dane Dahline
206-248-6519
dane.dahline@kidder.com

Lisa Rowe
206-777-5122
lisar@dpillc.com

The information provided in this document should be independently verified on any material matter represented herein.

Owned & Operated by:

DPI Davis Property
& Investment

Leasing by:

km Kidder
Mathews

dpillc.com