

DAVIS COMMERCE CENTER

22727 72nd Ave S, Suite D-108 Kent, WA 98032

Available Now

Warehouse/Flex Space



Property Specifications

- 3,200 SF Shell
- 1,300 SF Office
- 12' Clear Height
- 1 Grade Level Door
- New Finishes & LED Lighting
- 200 Amps 120/208 Volt 3-Phase Power
- End Cap Location

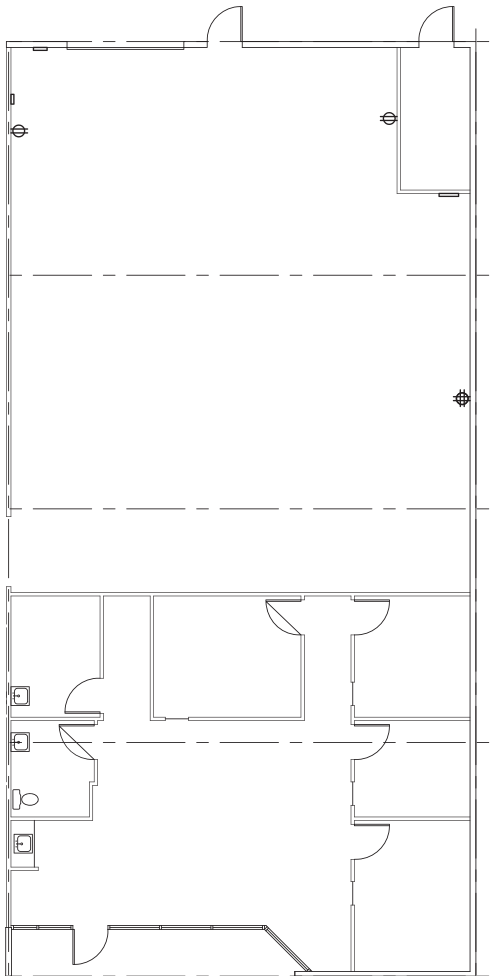
Property Features

- West Valley Highway Visibility
- Excellent freeway access to Highway 167 & I-5
- Monitored Video Surveillance & Security



DAVIS COMMERCE CENTER

DPI Davis Property
& Investment



Contact Kidder Mathews for more info:

Travis Stanaway
206-248-6526
travis.stanaway@kidder.com

Dane Dahline
206-248-6519
dane.dahline@kidder.com

Lisa Rowe
206-777-5122
lisar@davispropertiesllc.com

The information provided in this document should be independently verified on any material matter represented herein.

Owned & Operated by:

DPI Davis Property
& Investment

Leasing by:

km Kidder
Mathews

dpillc.com