

DPI EAST PARK

4520 B St NW, Suite D, Auburn, WA

Available 9/1/2024

Manufacturing/Distribution Space



Property Specifications

- 15,763 SF Shell
- 1,247 SF Office
- 4 dock-high doors
- 2 oversize grade-level doors (12'x16')
- 24' clear height
- 100 amps 277/480v 3-phase power
- Call for rates

Property Features

- Excellent location with access to B St, & SR-167/I-5 via 277th in Auburn



DPI EAST PARK



Contact Kidder Mathews for more info:

Travis Stanaway
206-248-6526
travis.stanaway@kidder.com

Matt Murray
206-248-6541
matt.murray@kidder.com

Dane Dahline
206-248-6519
dane.dahline@kidder.com

Lisa Rowe
206-777-5122
lisar@davispropertiesllc.com

The information provided in this document should be independently verified on any material matter represented herein.

Owned & Operated by:

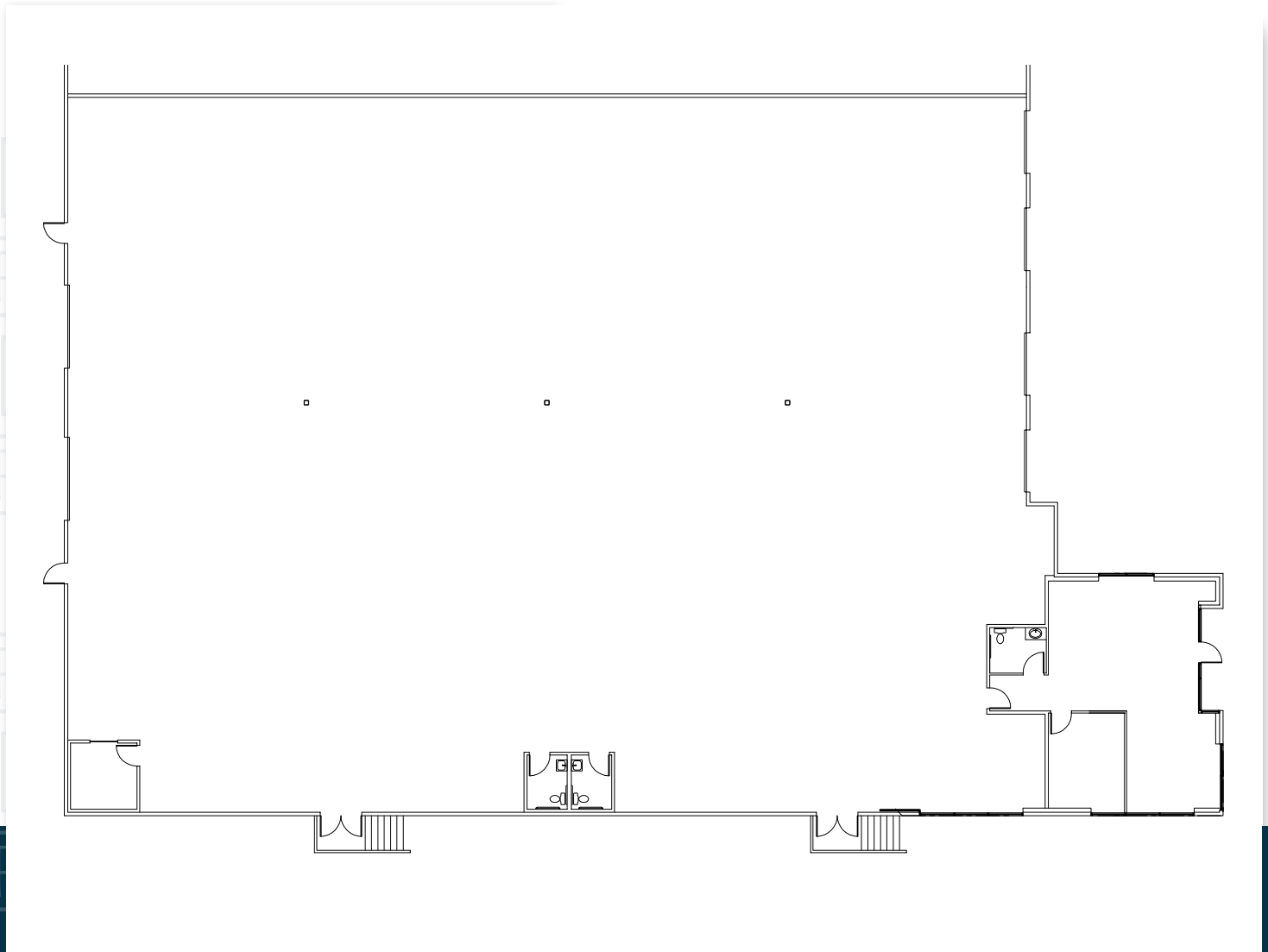


Leasing by:



dpillc.com

DPI EAST PARK



Contact Kidder Mathews for more info:

- | | | | |
|--|--|--|--|
| <p>Travis Stanaway
206-248-6526
travis.stanaway@kidder.com</p> | <p>Matt Murray
206-248-6541
matt.murray@kidder.com</p> | <p>Dane Dahline
206-248-6519
dane.dahline@kidder.com</p> | <p>Lisa Rowe
206-777-5122
lisar@davispropertiesllc.com</p> |
|--|--|--|--|

The information provided in this document should be independently verified on any material matter represented herein.