

# CENTRAL COMMERCE CENTER

8326 S 259th Street, Kent, WA

Available Now

Warehouse/Flex Space



## Property Specifications

- 3,627 SF Shell
- 1,947 SF Office (can be reduced to +/- 1,374 SF Office)
- 1 Grade level door
- 13' Clear height
- Programmable energy efficient lighting

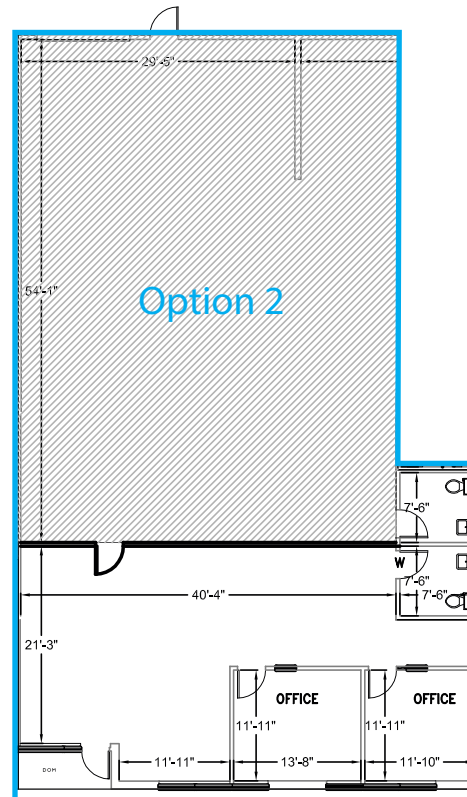
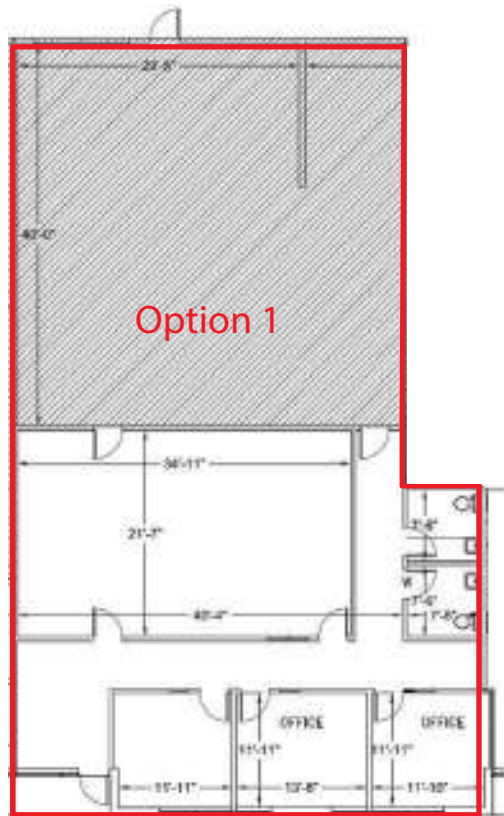
## Property Features

- Ample Parking
- Professional image business park
- Local Ownership
- Excellent access to Hwy-167 and Downtown Kent
- Responsive local ownership



# CENTRAL COMMERCE CENTER

8326 S 259th Street, Kent, WA



## Option 1 (existing): Suite 8326

3,627 SF Total  
1,947 SF Office  
13' Clear height  
1 Grade level door

## Option 2 (reconfiguration): Suite 8326

3,627 SF Total  
1,374 SF Office  
13' Clear height  
1 Grade level door

Contact Andover for more info:

Brian Bruininks, CCIM  
206-856-6249  
bbruininks@andoverco.com

Shane Mahvi, SIOR  
858-442-0441  
smahvi@andoverco.com

Lisa Rowe  
206-777-5122  
lisar@dpillc.com

The information provided in this document should be independently verified on any material matter represented herein.

Owned & Operated by:



dpillc.com