

CENTRAL COMMERCE CENTER

8326 S 259th Street, Kent, WA

Available Now

Warehouse/Flex Space



Property Specifications

- 3,627 SF Shell
- 1,947 SF Office (can be reduced to +/- 1,374 SF Office)
- 1 Grade level door
- 13' Clear height
- Programmable energy efficient lighting

Property Features

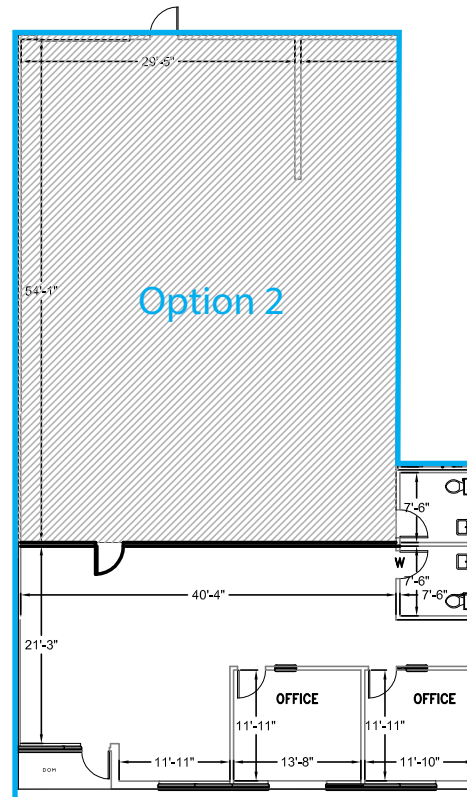
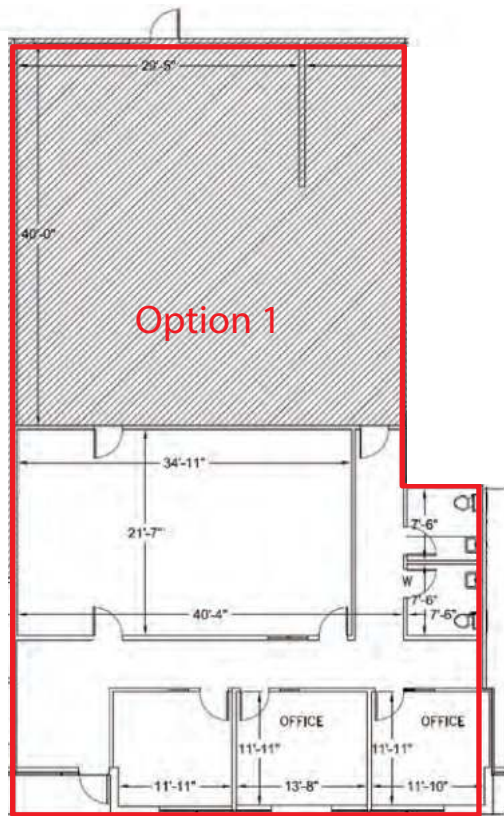
- Ample Parking
- Professional image business park
- Local Ownership
- Excellent access to Hwy-167 and Downtown Kent
- Responsive local ownership



CENTRAL COMMERCE CENTER

8326 S 259th Street, Kent, WA

DPI Davis Property & Investment



Option 1 (existing): Suite 8326

3,627 SF Total
1,947 SF Office
13' Clear height
1 Grade level door

Option 2 (reconfiguration): Suite 8326

3,627 SF Total
1,374 SF Office
13' Clear height
1 Grade level door

Contact Andover for more info:

Brian Bruininks, CCIM
206-856-6249
bbruininks@andoverco.com

Shane Mahvi, SIOR
858-442-0441
smahvi@andoverco.com

Lisa Rowe
206-777-5122
lisar@dpillc.com

The information provided in this document should be independently verified on any material matter represented herein.

Owned & Operated by:

DPI Davis Property & Investment

THE ANDOVER COMPANY, INC.
CORFAC INTERNATIONAL

dpillc.com

CENTRAL COMMERCE CENTER

8326 S 259th Street, Kent, WA

DPI Davis Property
& Investment



Contact Andover for more info:

Brian Bruininks, CCIM
206-856-6249
bbuininks@andoverco.com

Shane Mahvi, SIOR
858-442-0441
smahvi@andoverco.com

Lisa Rowe
206-777-5122
lisar@dpillc.com

The information provided in this document should be independently verified on any material matter represented herein.

Owned & Operated by:

DPI Davis Property
& Investment

**THE ANDOVER
COMPANY, INC.**
CORFAC INTERNATIONAL

dpillc.com